

DORSET ID ALWAYS IN CONTROL

ANIMALS



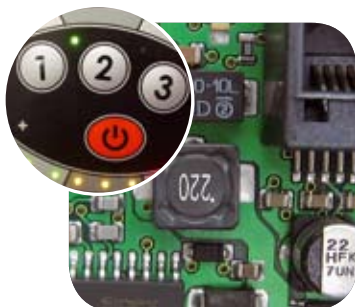
INDUSTRY



ACCESS CONTROL



ELECTRONICS



Dorset ID

Since 1989 we have been involved in developing RFID reading equipment for the Trovan® RFID system.

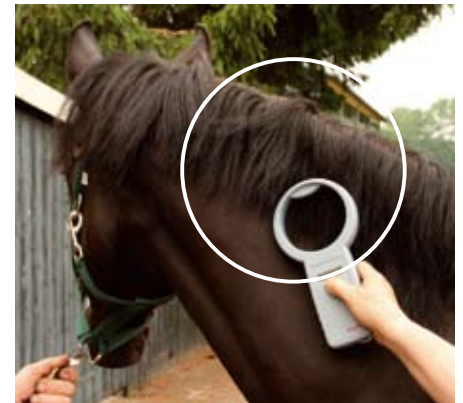
We offer a wide range of quality transponders and reading equipment. In addition, embedded software and PC applications are developed by our own engineers.

Our products are used worldwide for identification of animals, assets and inventory application as well as security applications and access control.

Animal identification

To identify animals, different kinds of transponders are used. Small glass encapsulated tags, which are the size of a grain of rice, are implanted under the skin and external ear tags are used to uniquely identify animals.

Our RFID systems are being used by laboratories, zoo's, WWF, as well as for the identification of pets. Dogs & cats can be easily identified and can be reunited with their owners if they are lost and are registered on the central database.

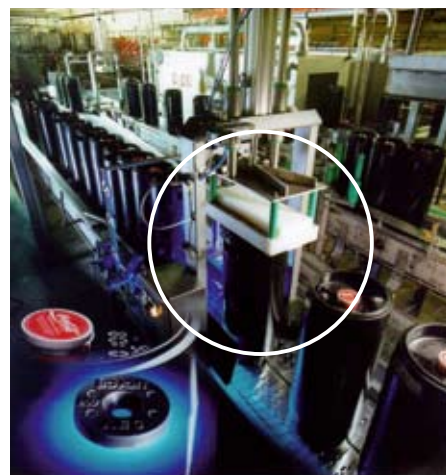


Identification method

Dorset identification b.v. is an authorized producer of Trovan™ reading equipment. This equipment is used worldwide for the identification of animals and products. By using the patented technology and the Phase Shift Keying (PSK) modulation technique our system is less sensitive to environmental noise compared to other RFID technologies.



Industrial applications



Industrial applications require high quality transponders and reading equipment. Our transponders meet the highest demands that are required by industrial applications. Extreme temperatures, pressure, acids and most solvents, shock resistance or even explosive environments, we always have a matching solution. This also applies to our antennas and decoders.

Our reading equipment has different interfaces (TCP/IP, USB, RS232, RS485 etc.) which makes them easily connectable to external equipment. If modifications in a protocol are required our engineering department can quickly implement these to make the systems talk.

For identification of containers, product carriers or internal transport equipment the transponder is integrated during the production process and with metal objects it is also possible to weld on the transponder. Product details or process information can be linked to the transponder ID.

Where is an object? How long has it been at the customers site? These and many other logistic questions are addressed by the use of transponders.





Access control and Time and attendance

Whether for a single door or for a large organization with multiple facilities, the Trovan Access Guard system (TAG) can make access management easy.

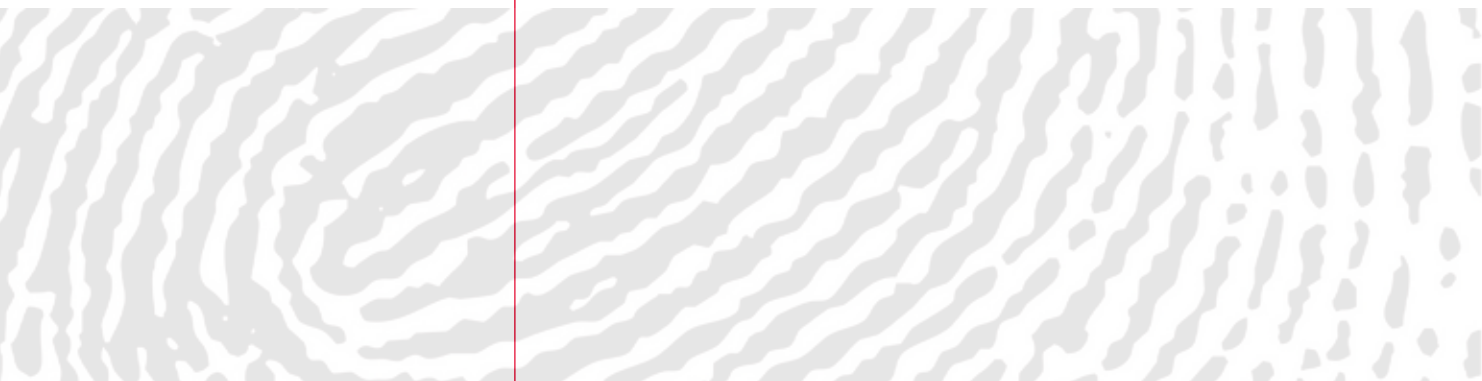


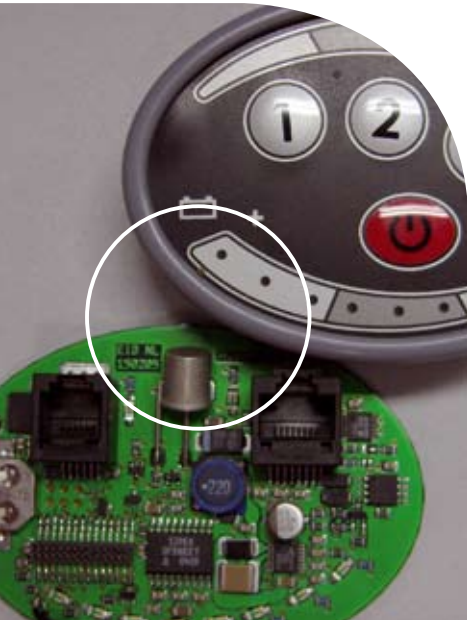
For every controlled area you can assign who gets access and when.

All employees get a badge or key fob with a unique ID number. This ID number allows certain access level/s, time and day-zones. per individual person, or a group of persons, you can easily grant access to a certain area. If someone loses his badge you can simply block this ID number to prevent unauthorized access.

The TAG system can be used for private homes, offices and sport clubs. Via the PC software the default settings can vary per location e.g. it is possible to open a certain door for office hours after the first authorized person entered.

Via the monitor function you can do a visual inspection. The image of the person entering is shown on a monitor. Remote control of doors is also possible, in combination with the optional time registration software it becomes possible to register attendance and time registration.





Development of customer specific electronics



Cockpit electric bicycle

Dorset ID developed an electronic cockpit for a manufacturer of electric bicycles for people with a disability. The existing "cockpit" was a key with potentiometer to set the amount of help. If people forgot to turn off the key, the batteries could be deep-discharged and destroyed. This caused a huge problem. Dorset ID analyzed the problem and made a proposal for a new design consisting of a microcontroller and 3 buttons to select 3 levels of help. The percentage of help per button can be set via the accompanying PC software. For children the maximum level could be set to 50%, adults can have a different maximum level depending on their disability. To prevent deep discharge of the batteries a motion sensor was introduced to automatically switch off the controller in case the bicycle stood still for a couple of minutes. Via the PC software the supplier and dealers can analyze how the bicycle is used, when the batteries were charged, how long

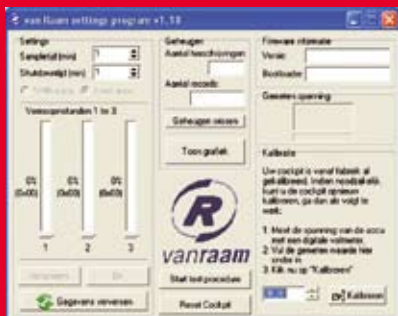
they have been used and what the battery voltage is.

Pig sorting system

The Sorti is a pig sorting system that can be used to select certain animals which are kept in groups. Depending on the weight of the animal or a visual mark, individual animals can be extracted from the group. Via the



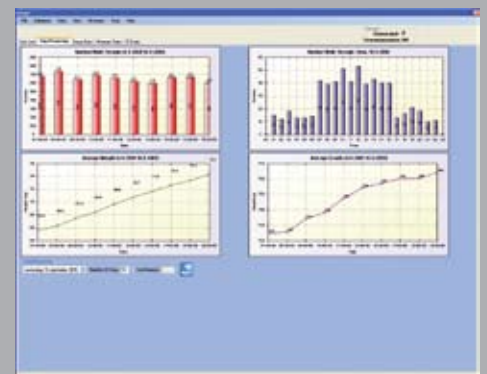
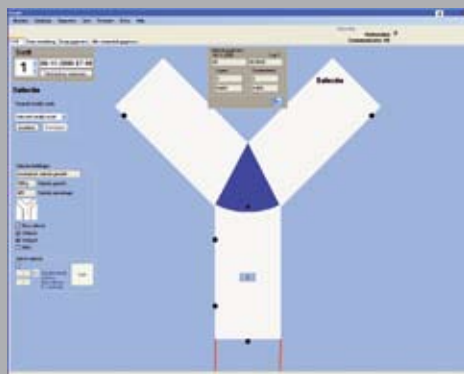
accompanying PC software data can be analyzed giving the user insight to growth, number of delivered pigs and other management information.



PC screen dump for setting up the controller, support level from 0 to 100% selectable



Graphical representation of battery voltage and support level



DORSET GP

DORSET GROUP

RFID-Technology,
electronic identification

DORSET ID

IDENTIFICATION

Drying Technology
to make use of residual heat

DORSET GM

GREEN MACHINES

Air cleaning, feeding systems
and sorting systems

DORSET FS

FARM SYSTEMS

Dorset Identification B.V.

Weverij 26 • 7122 MS Aalten • The Netherlands
Tel. +31 (0)543 47 71 19 • Fax +31 (0)543 47 53 55
Email id@dorset.nu



WWW.DORSET.NU